



## TWISTER

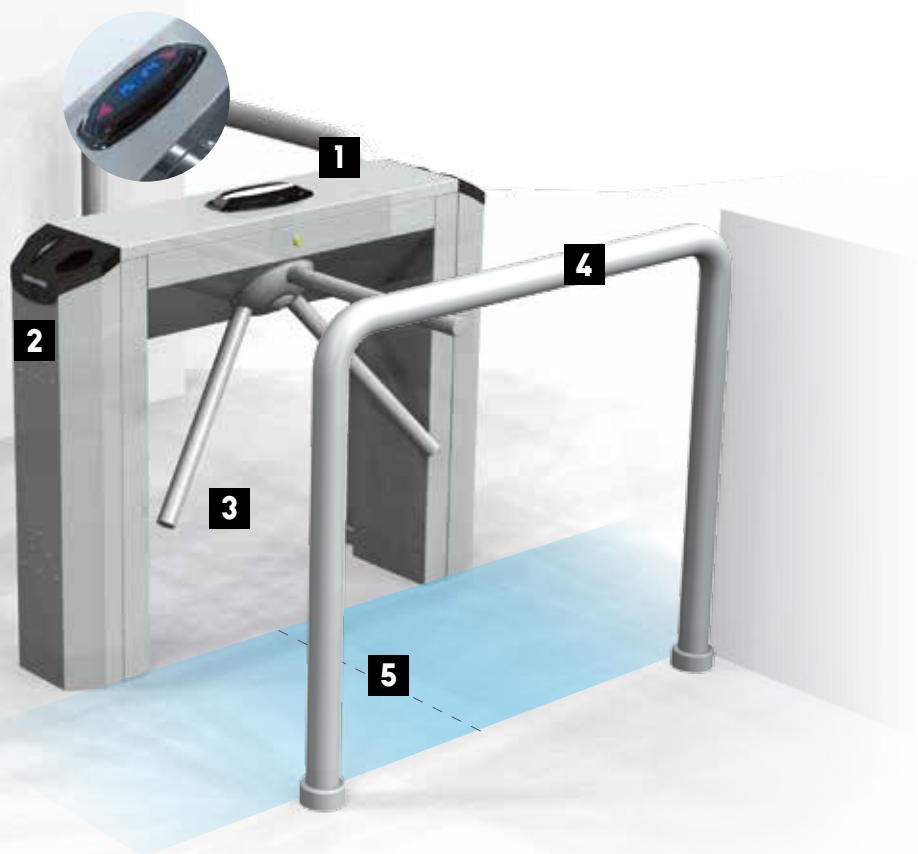
## TRIPOD TURNSTILE.

AISI 304 stainless  
steel finish

**CAME** 

[CAME.COM](https://www.came.com)





- 1**  
Two-way  
high-luminosity  
stop-go lights
- 2**  
Control sensors (only  
on PST001 versions)
- 3**  
Antipanic arms  
with pressure  
break-away joint  
(optional)
- 4**  
PSOPG01  
or PSOPGO1X  
barrier
- 5**  
Up to 550 mm  
of manageable  
passage breadth

**PRACTICAL AND FUNCTIONAL PASSAGE SELECTION.**

TWISTER is the tripod turnstile, versatile and resistant, suited for all transit control and selection needs, even in areas with high transit rates.



# THE BENEFITS OF CAME TWISTER

- TWISTER is a turnstile designed for regulating large numbers of transiting people.
- Made of AISI 304 stainless steel, it fits well at railway stations, metro stations, sports facilities - wherever regulating entering and exiting people-flows becomes indispensable.
- Controlled by the integrated control board, TWISTER is perfectly compatible with all state-of-the-art access control systems.
- TWISTER is available in electromechanic and motor-driven versions.



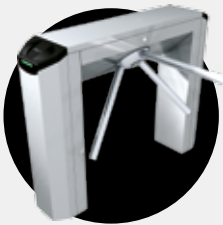
## STURDY AND EASY TO INSTALL

The outer structure, the tripod arm and lateral carters are made of scotch brite finished AISI 304 stainless steel. The side protective casings can be easily removed to ease the threading of connection cables, making it easier and fast to install and perform maintenance.

## SELLING POINTS THAT MEAN SOLUTIONS

- Two-way LED warning display.
- TWISTER is complete with control board, stop-go light with display also available with transponder sensors (only PST001).
- In case of power outages, the turnstile releases in both directions of rotation, to provide free passage.
- The model with “drop-down arm” function allows to instantly free up the passage in emergencies.
- In the TWS32MXZ model, the arm re-locks automatically in the event of a power outage/command.

### MODELS AVAILABLE



#### TWISTER LIGHT

Turnstile with lighted warning device



#### TWISTER

Turnstile compatible with access control systems



#### TWISTER MOTOR-DRIVEN

CAME turnstile Connect ready

## THE APPS TO CONTROL CAME SYSTEMS

In Italy 62% of the population owns smartphones and 21% own tablet PCs.\* These devices have become irreplaceable aids in our lives; also thanks to the Apps that provide control over new functions, every day. It's now all within your grasp. To meet these needs CAME has developed a series of custom Apps for controlling all of our products. Even from a remote location. And, we haven't stopped there. We've even improved the interaction between professional installers and private users. And that's how the CAME CONNECT web platform was born, to enable installers to map out all the systems while providing immediate assistance to their customers. Enter the CAME CONNECT world. Discover the CAME Apps > [www.cameconnect.net](http://www.cameconnect.net)

**CAMECONNECT**  
CLOUD CONNECTED TECHNOLOGY

CAME is a market leading home, industrial, and special technological projects automation manufacturing company. A full range of household solutions: from operators for gates and garage doors, to shutter and awning winding motors, and even home automation control, to burglar proof and video entry systems. Technology and reliability to serve your business, thanks to solutions designed for powering large industrial doors, automatic doors, street barriers, turnstiles, access control systems and parking facilities.

**CAME.COM**

# CAME AUTOMATED OPERATORS AND ACCESS CONTROL

SLIDING GATE OPERATORS



SWING-GATE OPERATOR



AUTOMATED OPERATORS FOR SECTIONAL AND GARAGE DOORS



AUTOMATIC STREET BARRIERS



INDUSTRIAL DOOR OPERATORS



SHUTTER OPERATORS



AUTOMATIC TURNSTILES AND ACCESS CONTROL



AUTOMATIC PARKING SYSTEMS



ACCESSORIES



COMPLETE SYSTEMS



## DEDICATED ACCESSORIES



Antipanic arms with pressure break-away joint.



Channeler complete with riser with AISI 304 stainless steel arch, galvanized steel anchoring flange and chromed plastic flange cover.



Electronic counter (for TWISTER Light).



Stop-go light with LED warning display (for TWISTER Light).

## SYSTEM'S COMPLEMENTARY ELEMENTS



Mono-directional barrier for trolleys. Available with 2, 3 or 4 arches.



Floor-anchored safety-barrier made of AISI 304 stainless steel and 6 mm polycarbonate panel. H = 900 mm.



Floor-anchored safety-barrier made of AISI 304 stainless steel without panel. H = 900 mm.



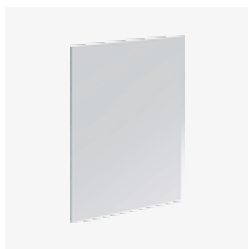
Safety barrier made of AISI 304 stainless steel with panic push-bar. Available with either left or right-hand column. L = 900 or 1200 mm, H = 1000 mm.



Galvanized steel post with fastening flange and chromed-plastic flange cover. H = 980 mm. Available without holes, with 2 holes, with 2 + 2 holes at 90° or at 180°, with 6 holes, and with 8 holes.



Post with fastening flange and cover made of AISI 304 stainless steel. H = 980 mm. Available without holes, with 2 holes, with 2 + 2 holes at 90° or at 180°, with 6 holes, and with 8 holes.



Transparent, 6-mm thick, polycarbonate panel. L = 750 mm, H = 800 mm.



Post made of AISI 304 stainless steel. H = 900 mm, Ø 80 mm. Available without clamps, with 2 clamps, with 2+2 clamps at 90° or at 180°, with 6 clamps, with 8 clamps.

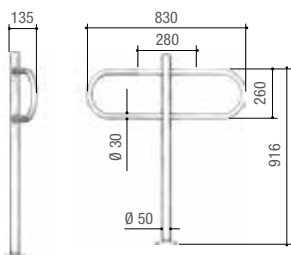
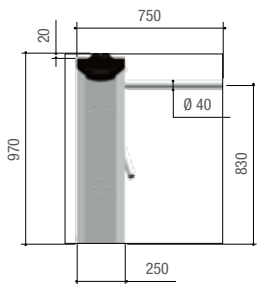
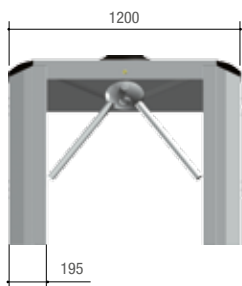


Sleeve joints. Made of chromed plastic, AISI 304 stainless steel and AISI 304 stainless steel specific for wall-fastening.



Horizontal tube for AISI 304 stainless steel safety barriers. ø 40 mm thickness 1 mm. Available in several sizes: 500, 1000, 1500, 2000 mm.

## DIMENSIONS (MM)



001PSOPG01  
001PSOPG01X



© KADENBE18 - 2018 - EN  
CAME RESERVES THE RIGHT TO MAKE ANY  
CHANGES TO THIS DOCUMENT, AT ANY TIME.  
EVEN PARTIAL REPRODUCTION IS PROHIBITED.

## TECHNICAL CHARACTERISTICS - MOTOR DRIVEN TWISTER AND TWISTER WITH TRANSPONDER SENSORS

| MODELS                           | 821TR-0010 | 821TR-0020 | PST001       | PST002       | PST003       | PST004       |
|----------------------------------|------------|------------|--------------|--------------|--------------|--------------|
| Protection rating (IP)           | 44         | 44         | 44           | 44           | 44           | 44           |
| Power supply (V - 50/60 Hz)      | 120-230 AC | 120-230 AC | 120 - 230 AC | 120 - 230 AC | 120 - 230 AC | 120 - 230 AC |
| Operating power supply (V)       | -          | -          | 24 DC        | 24 DC        | 24 DC        | 24 DC        |
| Stand-by consumption (W)         | 8          | 13         | -            | -            | -            | -            |
| Current draw (mA)                | -          | -          | 260          | 260          | 260          | 260          |
| Weight (kg)                      | 45         | 45         | 60           | 60           | 60           | 60           |
| Insulation class                 | I          | I          | -            | -            | -            | -            |
| Maximum number of passages/min.* | 30         | 30         | 12           | 12           | 12           | 12           |
| Power (W)                        | 180        | 180        | -            | -            | -            | -            |
| Operating temperature (°C)       | -20 to +55 | -20 to +55 | -20 to +55   | -20 to +55   | -20 to +55   | -20 to +55   |

NOTES: \* See the free-access mode

■ 230 V AC

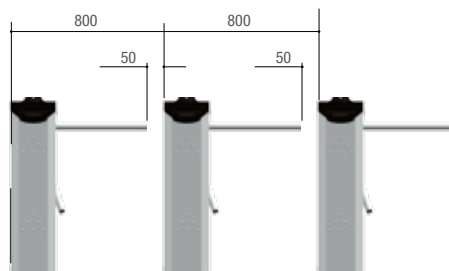
## TECHNICAL CHARACTERISTICS - TWISTER LIGHT WITHOUT TRANSPONDER SENSORS

| MODELS                             | PSBPS07N     | PSBPS08      | PSBPS09      | PSBPS10      |
|------------------------------------|--------------|--------------|--------------|--------------|
| Protection rating (IP)             | 44           | 44           | 44           | 44           |
| Power supply (V - 50/60 Hz)        | 120 - 230 AC | 120 - 230 AC | 120 - 230 AC | 120 - 230 AC |
| Operating power supply (V)         | 24 DC        | 24 DC        | 24 DC        | 24 DC        |
| Current draw (A)                   | 260          | 260          | 260          | 260          |
| Weight (Kg)                        | 60           | 60           | 60           | 60           |
| Maximum number of passages / min.* | 12           | 12           | 12           | 12           |
| Operating temperature (°C)         | -20 to +55   | -20 to +55   | -20 to +55   | -20 to +55   |

NOTES: \* See the free-access mode

■ 230 V AC

## APPLICATIONS (MM)



CAME S.p.A.  
has the following Quality,  
Environmental and Safety certifications:  
UNI EN ISO 9001  
UNI EN ISO 14001  
BS OHSAS 18001

# CAME

CAME S.p.A.  
Via Martiri della Libertà, 15  
31030 Dosson di Casier  
Treviso - ITALY

CAME.COM