

# Wing40

## Motorised swing turnstile



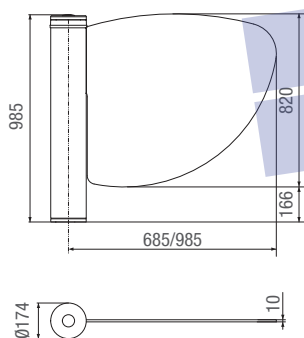
Remove Watermark Now

### Fast, elegant opening, with easy, safe installation

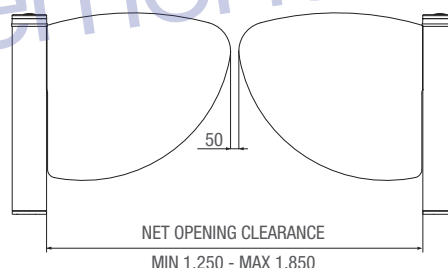


- The leaf secured inside the automation makes the lines extremely harmonious and simple.
- The built-in illuminated crown warns of leaf movement and operating status.
- Small in size, the control panel, power supply and electric brake are inside the automation, in a diameter of just 168 mm.
- The built-in electric brake blocks the leaf, allowing access to authorised users only.
- The motor with encoder enables easy management of the slowdown and obstacle detection stages.
- The programming and function display screen is located in an easily accessible place.
- Movement activation, via transponder card, magnetic card, buttons or photocells.
- Memory Roll for saving configurations and users.
- Stainless steel structure with plexiglas and tempered glass leaf.
- The speed of the leaf can be adjusted directly from the control panel.

#### Dimensions (mm)



#### Application (mm)



#### Limits to use

MODEL	PSWNG40
Max leaf length (mm/in)	900/ 35.43
Max leaf weight (Kg/lb)	15/33.06
Max leaf opening (°)	90

● 24 V DC

#### Technical information

Type	PSWNG40
Protection rating IP	40
Power supply (V - 50/60 Hz)	230 AC
Motor power supply (V)	24 DC
Opening speed to 90° (s)	1
Power (W)	120
Operating temperature (°C/°F)	-20 ÷ +55 / -4 ÷ +131

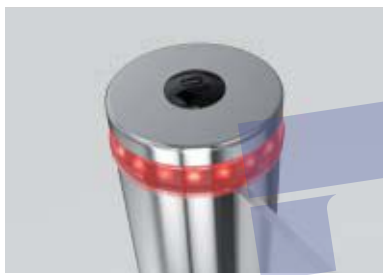
● 24 V DC

# The full range

Remove Watermark Now

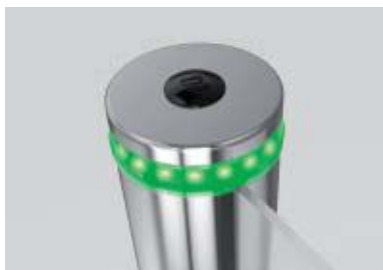
**CAME**

Code	Description	Price € (VAT not included)
<b>24 V DC motorised swing turnstile</b>		
001PSWNG40	24 V DC two-way motorised swing turnstile made of AISI 304 stainless steel complete with control panel.	
<b>Accessories</b>		
001PSWL60	Plexiglas leaf L = 600 mm / 23.62 in Thickness = 10 mm / 0.39 in.	
001PSWL90	Plexiglas leaf L = 900 mm / 35.43 in Thickness = 10 mm / 0.39 in.	
001PSWL60C	Glass leaf L = 600 mm / 23.62 in Thickness = 10 mm / 0.39 in.	
001PSWL90C	Glass leaf L = 900 mm / 35.43 in Thickness = 10 mm / 0.39 in.	



### RED ILLUMINATED CROWN

Warns of leaf closing.



### GREEN ILLUMINATED CROWN

Warns of leaf opening.



### BLUE ILLUMINATED CROWN

Warns that the leaf is about to close (Early warning flashing time can be adjusted electronically).



### CONTROL PANEL

Featuring a display, built-in to the automation, enabling fast, easy function control.