

PREVIDIA



FIRE DETECTION AND EXTINGUISHANT SYSTEMS

GUIDE FOR INTEGRATION
WITH SUPERVISION SYSTEMS

Obligations of the User

The User agrees to:

- keep the contents of this document in strictest confidence and not to disclose or make available any part of it, or copies thereof to third parties, without the prior written permission of INIM Electronics s.r.l.
- use the information contained in this document solely for the purpose of integrating management of the Praesidia control panel into the User's own supervisory software and not for any other purpose whatsoever. The information should be used in accordance with the regulations in force in the country of installation. Any use of the same that can, directly and/or indirectly, lead to system behaviour that differs from the applicable norms or the required security standards is to be attributed solely to the User's responsibility.

Limitations of Liability

INIM Electronics s.r.l. shall not be held responsible for any errors or omissions found in the information or for any deviations from the standard protocols. INIM Electronics s.r.l. reserves the right to make changes and/or updates to the information contained in the protocols at any time without prior notice.

The User is fully responsible for any damage that may arise, directly and/or indirectly, as a result of the incorrect use of the information contained in this document, thus INIM Electronics s.r.l. is exonerated from any liability attached to it.

In no case shall INIM Electronics s.r.l., its suppliers and licensors be liable for any consequential, incidental, direct, indirect or special damage of any nature, whether foreseeable or not, arising from the use of the information contained in this document.

Where these limitations of liability cannot be applied according to the law in force in the jurisdiction of the User, they must, however, be deemed valid and enforceable to the fullest extent permitted by the same law.

Copyright

The information contained in this document is the sole property of INIM Electronics s.r.l.

No part may be copied without written authorization from INIM Electronics s.r.l.

All rights reserved.

Table of contents

	Obligations of the User.....	2
	Limitations of Liability.....	2
	Copyright.....	2
	Table of contents	3
Chapter 1	General information	5
1.1	Details of Manufacturer	5
1.2	About this manual	5
Chapter 2	Connectible external systems.....	6
Chapter 3	Building Management System	7
3.1	Modbus RTU and Modbus over TCP/IP	7
3.2	BACnet	20
3.3	SmartLook Software	23
3.4	SmartLook Previdia server.....	23
Chapter 4	Pager systems	25
Chapter 5	Video verification.....	27
Chapter 6	Voice Evac-systems.....	29
6.1	Voice Evac configuration	29

General information

1.1 Details of Manufacturer

Manufacturer: INIM ELECTRONICS S.R.L.

Production plant: Centobuchi, via Dei Lavoratori 10

Municipality: 63076, Montepandone (AP) - Italy

Tel.: +39 0735 705007

Fax: +39 0735 704912

E-mail: info@inim.biz

Web: www.inim.biz

The personnel authorized by the manufacturer to repair or replace the components of this system have authorization to work only on devices marketed under the INIM Electronics brand.

1.2 About this manual

Manual code: DCMBINEOPREVIDIA

Revision: 1.20

This manual provides the installer with the guidelines relating to the integration of Previdia control panels with external monitoring systems.

1.2.1 Graphic conventions

Following are the graphic conventions used in this manual.

Conventions	Example	Description
Text in italics	Refer to <i>paragraph 1.2.1</i> <i>Graphic conventions</i>	Directs you to the title of a chapter, section, paragraph, table or figure in this manual or other indicated manual.
[Uppercase letter] or [number]	[A] or [1]	Symbolic representation of a part of the system or video object.

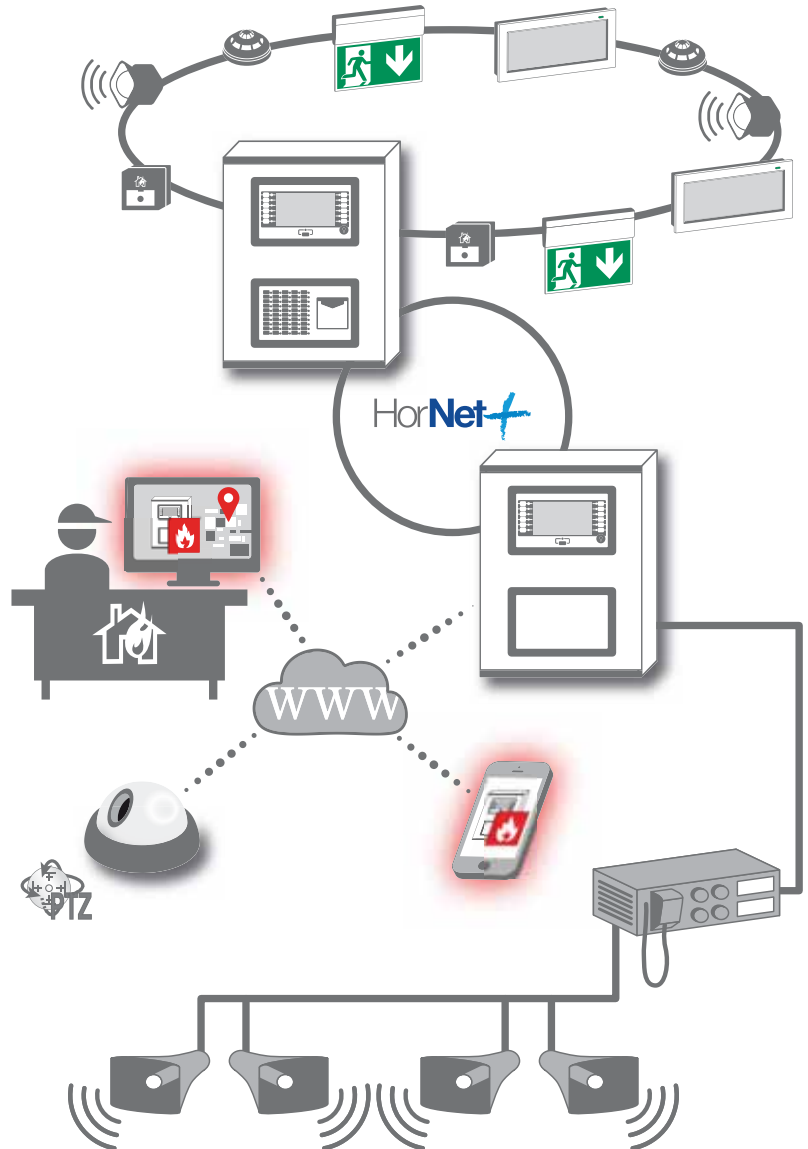
Note: *The notes contain important information relating to the text.*

Chapter 2

Connectible external systems

Previdia series control panels have been especially developed and designed for connection to various systems which are external to the fire detection system itself, such as:

- **BMS (Building Management System):** monitoring systems, usually comprising software installed on a PC platform, capable of monitoring and managing the system through graphic maps, function keys, etc. These systems constitute a simple interface for the end user.
- **Pager:** systems comprising a PABX capable of receiving text messages from other systems (in our case from fire-detection control panels) and forwarding them to remote devices such as pagers or displays of cordless telephones.
- **Video surveillance with IP cameras with Onvif protocol:** cameras installed in the same Ethernet network can be interconnected with the fire-detection control panel in order to provide images captured in ambients where dangerous situations have been detected (in the case of PTZ by positioning the camera at the correct angle). The images, visible on the control-panel console or from remote locations (via e-mail or web browser), provide a valid verification tool that allows the user to establish the seriousness or irrelevance of fire signalling.
- **Voice Evac:** voice evacuation systems comprise one or more control units (controller, amplifiers, power supplies) and a series of sound diffusion lines. These systems have the task of warning occupants of the necessity to evacuate the building and are more effective than sounders, as they are capable of providing detailed information regarding the fire. The interconnection of these systems and the fire detection system allows the activation of accurate voice messages relating specifically to the various zones in the building.



Building Management System

The connection of Previdia control panels with supervision systems (BMS, Building Management Systems) allows users to supervise and interact with their systems.

For this purpose Previdia control panels manage some of the most widely used communication protocols available on the market:

- **Modbus RTU:** protocol based on RS485 standard (for Previdia Max control panels only, available on the RS485-BMS port of the FPMCPU module)
- **Modbus over TCP/IP:** Modbus protocol based on TCP/IP standard, implemented on the Ethernet connection of the control panel
- **BACnet:** protocol based on TCP/IP (for Previdia Max control panels transmitted over the Ethernet port of the IFMLAN module and for Previdia Compact control panels, over the Ethernet port of the PREVIDIA-C-COM-LAN module). This protocol is subject to licencing.
- **SmartLook interface:** protocol property of Inim Electronics used by SmartLook software (implemented on the Ethernet port, RS232 and USB located on the FPMCPU module for Previdia Max control panels and on the Ethernet and USB ports located on the Previdia Compact control panels main board)

Following are the specifications of each of the previously-mentioned protocols.

3.1 Modbus RTU and Modbus over TCP/IP

A BMS software framework connected to a Previdia control panel via Modbus protocol, capable of supervising and managing the control panel itself and all the control panels interconnected with it through the Hornet+ network (for further details regarding Hornet+ networking refer to the Praesidia networking guide).

For this reason it is necessary to configure a Modbus address for each control panel to be reached.

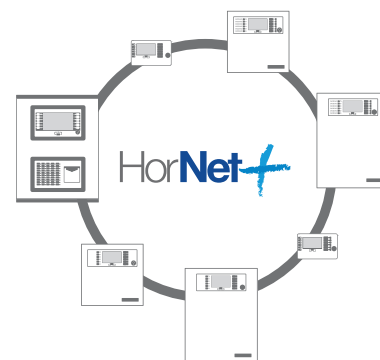
This setting must be done through the configuration software Previdia/Studio.

1. Open the Previdia/Studio solution that represents the system.
2. Select, from the control panels configured in the network, the control panel the BMS is connected to (via TCP/IP or RS485).
3. Access to the control panel CPU programming section:
 - per Previdia Max:** Click first on the FPMCPU module icon and then on the display.
 - per Previdia Compact:** Click first on the display.
 - per PREVIDIA-C-REP:** You access directly to the section of interests.
4. The section shows the **Modbus address** button. Click on the button.

For each of the control panels connected in the Hornet+ network, the software will allow you to set on the Modbus the address to which to respond. If you select the "No Address" setting the control panel in question will not respond to Modbus commands (protocol disabled).

For the MODBUS RTU protocol available on the RS485 port of the FPMCPU module, the RS485 serial parameters are set as follows:

- BitRate: 115200
- DataBit: 8
- Parity:Peer
- Stop bit: 1



Note: *Modbus RTU and Modbus TCP/IP protocols are available and are not subject to an activation licence.*

The Previdia control panel carries out the following commands via the Modbus:

- READ INPUT REGISTERS
- WRITE SINGLE COIL

With a single reading the maximum number of readable registers is 125.

3.1.1 Register Mapping

The “READ INPUT REGISTERS” command serves to interrogate the control panel in relation to its status and the status of its connected components in accordance with the register mapping as shown below:

Registers for Previdia Max control panels (use Modbus 0x04 command to read)																		
Address	Name	High byte								Low byte								
		Bit 7	Bit 6	Bit 5	Bit 4	Bit 3	Bit 2	Bit 1	Bit 0	Bit 7	Bit 6	Bit 5	Bit 4	Bit 3	Bit 2	Bit 1	Bit 0	
0	Control panel details Status 1	Access with level 1-4				Buzzer Silenced	Investigation	Mute	Night mode				Disabled	Fault	Early warning	Pre-alarm	Alarm	
1	Control panel details Status 2						Fault on +24 RS485-2	Fault on +24 RS485-1				Fault on ground (earth)	RT network	Fault fault	Low battery	Fault fault		
2	Modules fault	Module fault IFMDIAL	Module fault IFMNET	Fault CPU emergency	Module fault IFMLAN	Module fault IFM16IO 4	Module fault IFM16IO 3	Module fault IFM16IO 2	Module fault IFM16IO 1	Module fault IFM2L 8	Module fault IFM2L 7	Module fault IFM2L 6	Module fault IFM2L 5	Module fault IFM2L 4	Module fault IFM2L 3	Module fault IFM2L 2	Module fault IFM2L 1	
3	Module fault IFMEXT 1-16	Module fault IFMEXT 16	Module fault IFMEXT 15	Module fault IFMEXT 14	Module fault IFMEXT 13	Module fault IFMEXT 12	Module fault IFMEXT 11	Module fault IFMEXT 10	Module fault IFMEXT 9	Module fault IFMEXT 8	Module fault IFMEXT 7	Module fault IFMEXT 6	Module fault IFMEXT 5	Module fault IFMEXT 4	Module fault IFMEXT 3	Module fault IFMEXT 2	Module fault IFMEXT 1	
4	Module fault IFMEXT 17-24									Module fault IFMEXT 24	Module fault IFMEXT 23	Module fault IFMEXT 22	Module fault IFMEXT 21	Module fault IFMEXT 20	Module fault IFMEXT 19	Module fault IFMEXT 18	Module fault IFMEXT 17	
5	Module fault IFM4IO	Module fault IFM4IO 16	Module fault IFM4IO 15	Module fault IFM4IO 14	Module fault IFM4IO 13	Module fault IFM4IO 12	Module fault IFM4IO 11	Module fault IFM4IO 10	Module fault IFM4IO 9	Module fault IFM4IO 8	Module fault IFM4IO 7	Module fault IFM4IO 6	Module fault IFM4IO 5	Module fault IFM4IO 4	Module fault IFM4IO 3	Module fault IFM4IO 2	Module fault IFM4IO 1	
6	Fault modules fault					Module fault IFM24160 4	Module fault IFM24160 3	Module fault IFM24160 2	Module fault IFM24160 1		Module fault FPMLD 7	Module fault FPMLD 6	Module fault FPMLD 5	Module fault FPMLD 4	Module fault FPMLD 3	Module fault FPMLD 2	Module fault FPMLD 1	
7	Module fault IFM4R	Module fault IFM4R 16	Module fault IFM4R 15	Module fault IFM4R 14	Module fault IFM4R 13	Module fault IFM4R 12	Module fault IFM4R 11	Module fault IFM4R 10	Module fault IFM4R 9	Module fault IFM4R 8	Module fault IFM4R 7	Module fault IFM4R 6	Module fault IFM4R 5	Module fault IFM4R 4	Module fault IFM4R 3	Module fault IFM4R 2	Module fault IFM4R 1	
8	Active Timers 1	Timer 16	Timer 15	Timer 14	Timer 13	Timer 12	Timer 11	Timer 10	Timer 9	Timer 8	Timer 7	Timer 6	Timer 5	Timer 4	Timer 3	Timer 2	Timer 1	
9	Active Timers 2	Timer 32	Timer 31	Timer 30	Timer 29	Timer 28	Timer 27	Timer 26	Timer 25	Timer 24	Timer 23	Timer 22	Timer 21	Timer 20	Timer 19	Timer 18	Timer 17	
10	Disabled Timers 1	Timer 16	Timer 15	Timer 14	Timer 13	Timer 12	Timer 11	Timer 10	Timer 9	Timer 8	Timer 7	Timer 6	Timer 5	Timer 4	Timer 3	Timer 2	Timer 1	
11	Disabled Timers 2	Timer 32	Timer 31	Timer 30	Timer 29	Timer 28	Timer 27	Timer 26	Timer 25	Timer 24	Timer 23	Timer 22	Timer 21	Timer 20	Timer 19	Timer 18	Timer 17	

Registers for Previdia Max control panels (use Modbus 0x04 command to read)

Address	Name	High byte								Low byte							
		Bit 7	Bit 6	Bit 5	Bit 4	Bit 3	Bit 2	Bit 1	Bit 0	Bit 7	Bit 6	Bit 5	Bit 4	Bit 3	Bit 2	Bit 1	Bit 0
12	Loop fault	Fault loop 16	Fault loop 15	Fault loop 14	Fault loop 13	Fault loop 12	Fault loop 11	Fault loop 10	Fault loop 9	Fault loop 8	Fault loop 7	Fault loop 6	Fault loop 5	Fault loop 4	Fault loop 3	Fault loop 2	Fault loop 1
13	Loop disabled	Loop 16 disabled	Loop 15 disabled	Loop 14 disabled	Loop 13 disabled	Loop 12 disabled	Loop 11 disabled	Loop 10 disabled	Loop 9 disabled	Loop 8 disabled	Loop 7 disabled	Loop 6 disabled	Loop 5 disabled	Loop 4 disabled	Loop 3 disabled	Loop 2 disabled	Loop 1 disabled
20	Status of telephone communicator 1	Monitoring failed	Call queue full	SMS fault	SMS OK	Fault call failed	Fault call OK	Alarm call failed	Alarm call OK	Fault call ongoing	Alarm call ongoing				GPRS Fault	PSTN Fault	GSM Fault
21	Status of telephone communicator 2					Fault GSM module	Provider unavailable	Fault on SIM Card	Weak signal						Info call disabled	Fault call disabled	Alarm call disabled
22	Communicator status icons	Status icons Alarm communicator								Status icons communicator fault							
25	Fire extinction module 1									Fault	Automatic stop	Manual stop	Pre-extinction	Extinction	Manual disabled	Automatic disabled	Disabled
...	...																
48	Fire extinction module 24									Fault	Automatic stop	Manual stop	Pre-extinction	Extinction	Manual disabled	Automatic disabled	Disabled
49	Faults on module terminals of extinction 1			Short circuit on HOLD	HOLD open	Short circuit on MAN-EXT	MAN-EXT open	Short circuit on PRESSURE SWITCH	PRESSURE SWITCH open	Short circuit on STOP-EXT	STOP-EXT open	Short circuit on PRE-EXT	PRE-EXT open	Short circuit on RELEASED	RELEASED open	Short circuit on VALVE	VALVE open
...	...																
72	Faults on module terminals of extinction 24			Short circuit on HOLD	HOLD open	Short circuit on MAN-EXT	MAN-EXT open	Short circuit on PRESSURE SWITCH	PRESSURE SWITCH open	Short circuit on STOP-EXT	STOP-EXT open	Short circuit on PRE-EXT	PRE-EXT open	Short circuit on RELEASED	RELEASED open	Short circuit on VALVE	VALVE open
100	Zone 1 Zone 2	Zone 2								Zone 1							
		Smoke detection disabled	Test	Do not use	Disabled	Fault	Early warning	Pre-alarm	Alarm	Smoke detection disabled	Test	Do not use	Disabled	Fault	Early warning	Pre-alarm	Alarm
...	...																
599	Zone 999 Zone 1000	Zone 1000								Zone 999							
		Smoke detection disabled	Test	Do not use	Disabled	Fault	Early warning	Pre-alarm	Alarm	Smoke detection disabled	Test	Do not use	Disabled	Fault	Early warning	Pre-alarm	Alarm

Registers for Previdia Max control panels (use Modbus 0x04 command to read)

Address	Name	High byte								Low byte							
		Bit 7	Bit 6	Bit 5	Bit 4	Bit 3	Bit 2	Bit 1	Bit 0	Bit 7	Bit 6	Bit 5	Bit 4	Bit 3	Bit 2	Bit 1	Bit 0
600	Group 1 Group 2	Group 2								Group 1							
		Do not use	Do not use	Do not use	Disabled	Do not use	Early warning	Pre-alarm	Alarm	Do not use	Do not use	Do not use	Disabled	Do not use	Early warning	Pre-alarm	Alarm
...	...																
719	Group 239 Group 240	Group 240								Group 239							
		Do not use	Do not use	Do not use	Disabled	Do not use	Early warning	Pre-alarm	Alarm	Do not use	Do not use	Do not use	Disabled	Do not use	Early warning	Pre-alarm	Alarm
...	...																
868	IFM16IO 1 Module channels 1, 2	IFM16IO 1 Module, channel 2								IFM16IO 1 Module, channel 1							
		Do not use	Input activated in test mode	Output status	Disabled	Do not use	Early warning	Pre-alarm	Alarm	Do not use	Input activated in test mode	Output status	Disabled	Do not use	Early warning	Pre-alarm	Alarm
...	...																
899	IFM16IO 4 Module channels 15, 16	IFM16IO 4 Module, channel 16								IFM16IO 4 Module, channel 15							
		Do not use	Input activated in test mode	Output status	Disabled	Do not use	Early warning	Pre-alarm	Alarm	Do not use	Input activated in test mode	Output status	Disabled	Do not use	Early warning	Pre-alarm	Alarm
...	...																
900	IFM4IO 1 Module channels 1, 2	IFM4IO 1 Module, channel 2								IFM4IO 1 Module, channel 1							
		Do not use	Input activated in test mode	Output status	Disabled	Fault	Early warning	Pre-alarm	Alarm	Do not use	Input activated in test mode	Output status	Disabled	Fault	Early warning	Pre-alarm	Alarm
...	...																
931	IFM4IO 16 Module channels 3, 4	IFM4IO 16 Module, channel 4								IFM4IO 16 Module, channel 3							
		Do not use	Input activated in test mode	Output status	Disabled	Fault	Early warning	Pre-alarm	Alarm	Do not use	Input activated in test mode	Output status	Disabled	Fault	Early warning	Pre-alarm	Alarm
...	...																
932	Module IFM4R 1 channels 1, 2	IFM4R 1 Module, channel 2								IFM4R 1 Module, channel 1							
		Do not use	Do not use	Output status	Disabled	Do not use	Do not use	Do not use	Do not use	Do not use	Do not use	Output status	Disabled	Do not use	Do not use	Do not use	Do not use
...	...																
963	Module IFM4R 16 channels 3, 4	IFM4R 16 Module, channel 4								IFM4R 16 Module, channel 3							
		Do not use	Do not use	Output status	Disabled	Do not use	Do not use	Do not use	Do not use	Do not use	Do not use	Output status	Disabled	Do not use	Do not use	Do not use	Do not use
...	...																
964	IFM24160 1 Module output 1 output 2	IFM24160 1 Module, output 2								IFM24160 1 Module, output 1							
		Do not use	Do not use	Output status	Disabled	Fault	Do not use	Do not use	Do not use	Do not use	Do not use	Output status	Disabled	Fault	Do not use	Do not use	Do not use

Registers for Previdia Max control panels (use Modbus 0x04 command to read)

Address	Name	High byte								Low byte								
		Bit 7	Bit 6	Bit 5	Bit 4	Bit 3	Bit 2	Bit 1	Bit 0	Bit 7	Bit 6	Bit 5	Bit 4	Bit 3	Bit 2	Bit 1	Bit 0	
965	IFM24160 1 Module Output 3 IFM24160 2 Module Output 1	IFM24160 2 Module, output 1								IFM24160 1 Module, output 3								
		Do not use	Do not use	Output status	Disabled	Fault	Do not use	Do not use	Do not use	Do not use	Do not use	Do not use	Output status	Disabled	Fault	Do not use	Do not use	Do not use
966	IFM24160 2 Module output 2 output 3	IFM24160 2 Module, output 3								IFM24160 2 Module, output 2								
		Do not use	Do not use	Output status	Disabled	Fault	Do not use	Do not use	Do not use	Do not use	Do not use	Do not use	Output status	Disabled	Fault	Do not use	Do not use	Do not use
967	IFM24160 3 Module output 1 output 2	IFM24160 3 Module, output 2								IFM24160 3 Module, output 1								
		Do not use	Do not use	Output status	Disabled	Fault	Do not use	Do not use	Do not use	Do not use	Do not use	Do not use	Output status	Disabled	Fault	Do not use	Do not use	Do not use
968	IFM24160 3 Module Output 3 IFM24160 4 Module Output 1	IFM24160 4 Module, output 1								IFM24160 3 Module, output 3								
		Do not use	Do not use	Output status	Disabled	Fault	Do not use	Do not use	Do not use	Do not use	Do not use	Do not use	Output status	Disabled	Fault	Do not use	Do not use	Do not use
969	IFM24160 4 Module output 2 output 3	IFM24160 4 Module, output 3								IFM24160 4 Module, output 2								
		Do not use	Do not use	Output status	Disabled	Fault	Do not use	Do not use	Do not use	Do not use	Do not use	Do not use	Output status	Disabled	Fault	Do not use	Do not use	Do not use
1000	Information not shared over Hornet																	Rearm Control panel
1001	Loop 1 Address 1 Address 2	Loop1 address 2								Loop1 address 1								
		Do not use	Input activated in test mode	Output status	Disabled	Fault	Early warning	Pre-alarm	Alarm	Do not use	Input activated in test mode	Output status	Disabled	Fault	Early warning	Pre-alarm	Alarm	
...	...																	
1120	Loop 1 Address 239 Address 240	Loop1 address 240								Loop1 address 239								
		Do not use	Input activated in test mode	Output status	Disabled	Fault	Early warning	Pre-alarm	Alarm	Do not use	Input activated in test mode	Output status	Disabled	Fault	Early warning	Pre-alarm	Alarm	
1121	Loop 2 Address 1 Address 2	Loop 2 address 2								Loop 2 address 1								
		Do not use	Input activated in test mode	Output status	Disabled	Fault	Early warning	Pre-alarm	Alarm	Do not use	Input activated in test mode	Output status	Disabled	Fault	Early warning	Pre-alarm	Alarm	
...	...																	
1240	Loop 2 Address 239 Address 240	Loop 2 address 240								Loop 2 address 239								
		Do not use	Input activated in test mode	Output status	Disabled	Fault	Early warning	Pre-alarm	Alarm	Do not use	Input activated in test mode	Output status	Disabled	Fault	Early warning	Pre-alarm	Alarm	

Registers for Previdia Max control panels (use Modbus 0x04 command to read)

Address	Name	High byte								Low byte							
		Bit 7	Bit 6	Bit 5	Bit 4	Bit 3	Bit 2	Bit 1	Bit 0	Bit 7	Bit 6	Bit 5	Bit 4	Bit 3	Bit 2	Bit 1	Bit 0
1241	Loop 3 Address 1 Address 2	Loop 3 address 2								Loop 3 address 1							
		Do not use	Input activated in test mode	Output status	Disabled	Fault	Early warning	Pre-alarm	Alarm	Do not use	Input activated in test mode	Output status	Disabled	Fault	Early warning	Pre-alarm	Alarm
...	...																
1360	Loop 3 Address 239 Address 240	Loop 3 address 240								Loop 3 address 239							
		Do not use	Input activated in test mode	Output status	Disabled	Fault	Early warning	Pre-alarm	Alarm	Do not use	Input activated in test mode	Output status	Disabled	Fault	Early warning	Pre-alarm	Alarm
...	...																
1361	Loop 4 Address 1 Address 2	Loop 4 address 2								Loop 4 address 1							
		Do not use	Input activated in test mode	Output status	Disabled	Fault	Early warning	Pre-alarm	Alarm	Do not use	Input activated in test mode	Output status	Disabled	Fault	Early warning	Pre-alarm	Alarm
...	...																
1480	Loop 4 Address 239 Address 240	Loop 4 address 240								Loop 4 address 239							
		Do not use	Input activated in test mode	Output status	Disabled	Fault	Early warning	Pre-alarm	Alarm	Do not use	Input activated in test mode	Output status	Disabled	Fault	Early warning	Pre-alarm	Alarm
...	...																
1481	Loop 5 Address 1 Address 2	Loop 5 address 2								Loop 5 address 1							
		Do not use	Input activated in test mode	Output status	Disabled	Fault	Early warning	Pre-alarm	Alarm	Do not use	Input activated in test mode	Output status	Disabled	Fault	Early warning	Pre-alarm	Alarm
...	...																
1600	Loop 5 Address 239 Address 240	Loop 5 address 240								Loop 5 address 239							
		Do not use	Input activated in test mode	Output status	Disabled	Fault	Early warning	Pre-alarm	Alarm	Do not use	Input activated in test mode	Output status	Disabled	Fault	Early warning	Pre-alarm	Alarm
...	...																
1601	Loop 6 Address 1 Address 2	Loop 6 address 2								Loop 6 address 1							
		Do not use	Input activated in test mode	Output status	Disabled	Fault	Early warning	Pre-alarm	Alarm	Do not use	Input activated in test mode	Output status	Disabled	Fault	Early warning	Pre-alarm	Alarm
...	...																

Registers for Previdia Max control panels (use Modbus 0x04 command to read)

Address	Name	High byte								Low byte							
		Bit 7	Bit 6	Bit 5	Bit 4	Bit 3	Bit 2	Bit 1	Bit 0	Bit 7	Bit 6	Bit 5	Bit 4	Bit 3	Bit 2	Bit 1	Bit 0
1720	Loop 6 Address 239 Address 240	Loop 6 address 240								Loop 6 address 239							
		Do not use	Input activated in test mode	Output status	Disabled	Fault	Early warning	Pre-alarm	Alarm	Do not use	Input activated in test mode	Output status	Disabled	Fault	Early warning	Pre-alarm	Alarm
1721	Loop 7 Address 1 Address 2	Loop 7 address 2								Loop 7 address 1							
		Do not use	Input activated in test mode	Output status	Disabled	Fault	Early warning	Pre-alarm	Alarm	Do not use	Input activated in test mode	Output status	Disabled	Fault	Early warning	Pre-alarm	Alarm
...	...																
1840	Loop 7 Address 239 Address 240	Loop 7 address 240								Loop 7 address 239							
		Do not use	Input activated in test mode	Output status	Disabled	Fault	Early warning	Pre-alarm	Alarm	Do not use	Input activated in test mode	Output status	Disabled	Fault	Early warning	Pre-alarm	Alarm
1841	Loop 8 Address 1 Address 2	Loop 8 address 2								Loop 8 address 1							
		Do not use	Input activated in test mode	Output status	Disabled	Fault	Early warning	Pre-alarm	Alarm	Do not use	Input activated in test mode	Output status	Disabled	Fault	Early warning	Pre-alarm	Alarm
...	...																
1960	Loop 8 Address 239 Address 240	Loop 8 address 240								Loop 8 address 239							
		Do not use	Input activated in test mode	Output status	Disabled	Fault	Early warning	Pre-alarm	Alarm	Do not use	Input activated in test mode	Output status	Disabled	Fault	Early warning	Pre-alarm	Alarm
1961	Loop 9 Address 1 Address 2	Loop 9 address 2								Loop 9 address 1							
		Do not use	Input activated in test mode	Output status	Disabled	Fault	Early warning	Pre-alarm	Alarm	Do not use	Input activated in test mode	Output status	Disabled	Fault	Early warning	Pre-alarm	Alarm
...	...																
2080	Loop 9 Address 239 Address 240	Loop 9 address 240								Loop 9 address 239							
		Do not use	Input activated in test mode	Output status	Disabled	Fault	Early warning	Pre-alarm	Alarm	Do not use	Input activated in test mode	Output status	Disabled	Fault	Early warning	Pre-alarm	Alarm

Registers for Previdia Max control panels (use Modbus 0x04 command to read)

Address	Name	High byte								Low byte							
		Bit 7	Bit 6	Bit 5	Bit 4	Bit 3	Bit 2	Bit 1	Bit 0	Bit 7	Bit 6	Bit 5	Bit 4	Bit 3	Bit 2	Bit 1	Bit 0
2081	Loop 10 Address 1 Address 2	Loop 10 address 2								Loop 10 address 1							
		Do not use	Input activated in test mode	Output status	Disabled	Fault	Early warning	Pre-alarm	Alarm	Do not use	Input activated in test mode	Output status	Disabled	Fault	Early warning	Pre-alarm	Alarm
...	...																
2200	Loop 10 Address 239 Address 240	Loop 10 address 240								Loop 10 address 239							
		Do not use	Input activated in test mode	Output status	Disabled	Fault	Early warning	Pre-alarm	Alarm	Do not use	Input activated in test mode	Output status	Disabled	Fault	Early warning	Pre-alarm	Alarm
...	...																
2201	Loop 11 Address 1 Address 2	Loop 11 address 2								Loop 11 address 1							
		Do not use	Input activated in test mode	Output status	Disabled	Fault	Early warning	Pre-alarm	Alarm	Do not use	Input activated in test mode	Output status	Disabled	Fault	Early warning	Pre-alarm	Alarm
...	...																
2320	Loop 11 Address 239 Address 240	Loop 11 address 240								Loop 11 address 239							
		Do not use	Input activated in test mode	Output status	Disabled	Fault	Early warning	Pre-alarm	Alarm	Do not use	Input activated in test mode	Output status	Disabled	Fault	Early warning	Pre-alarm	Alarm
...	...																
2321	Loop 12 Address 1 Address 2	Loop 12 address 2								Loop 12 address 1							
		Do not use	Input activated in test mode	Output status	Disabled	Fault	Early warning	Pre-alarm	Alarm	Do not use	Input activated in test mode	Output status	Disabled	Fault	Early warning	Pre-alarm	Alarm
...	...																
2440	Loop 12 Address 239 Address 240	Loop 12 address 240								Loop 12 address 239							
		Do not use	Input activated in test mode	Output status	Disabled	Fault	Early warning	Pre-alarm	Alarm	Do not use	Input activated in test mode	Output status	Disabled	Fault	Early warning	Pre-alarm	Alarm
...	...																
2441	Loop 13 Address 1 Address 2	Loop 13 address 2								Loop 13 address 1							
		Do not use	Input activated in test mode	Output status	Disabled	Fault	Early warning	Pre-alarm	Alarm	Do not use	Input activated in test mode	Output status	Disabled	Fault	Early warning	Pre-alarm	Alarm
...	...																

Registers for Previdia Max control panels (use Modbus 0x04 command to read)

Address	Name	High byte								Low byte							
		Bit 7	Bit 6	Bit 5	Bit 4	Bit 3	Bit 2	Bit 1	Bit 0	Bit 7	Bit 6	Bit 5	Bit 4	Bit 3	Bit 2	Bit 1	Bit 0
2560	Loop 13 Address 239 Address 240	Loop 13 address 240								Loop 13 address 239							
		Do not use	Input activated in test mode	Output status	Disabled	Fault	Early warning	Pre-alarm	Alarm	Do not use	Input activated in test mode	Output status	Disabled	Fault	Early warning	Pre-alarm	Alarm
2561	Loop 14 Address 1 Address 2	Loop 14 address 2								Loop 14 address 1							
		Do not use	Input activated in test mode	Output status	Disabled	Fault	Early warning	Pre-alarm	Alarm	Do not use	Input activated in test mode	Output status	Disabled	Fault	Early warning	Pre-alarm	Alarm
...	...																
2680	Loop 14 Address 239 Address 240	Loop 14 address 240								Loop 14 address 239							
		Do not use	Input activated in test mode	Output status	Disabled	Fault	Early warning	Pre-alarm	Alarm	Do not use	Input activated in test mode	Output status	Disabled	Fault	Early warning	Pre-alarm	Alarm
2681	Loop 15 Address 1 Address 2	Loop 15 address 2								Loop 15 address 1							
		Do not use	Input activated in test mode	Output status	Disabled	Fault	Early warning	Pre-alarm	Alarm	Do not use	Input activated in test mode	Output status	Disabled	Fault	Early warning	Pre-alarm	Alarm
...	...																
2800	Loop 15 Address 239 Address 240	Loop 15 address 240								Loop 15 address 239							
		Do not use	Input activated in test mode	Output status	Disabled	Fault	Early warning	Pre-alarm	Alarm	Do not use	Input activated in test mode	Output status	Disabled	Fault	Early warning	Pre-alarm	Alarm
2801	Loop 16 Address 1 Address 2	Loop 16 address 2								Loop 16 address 1							
		Do not use	Input activated in test mode	Output status	Disabled	Fault	Early warning	Pre-alarm	Alarm	Do not use	Input activated in test mode	Output status	Disabled	Fault	Early warning	Pre-alarm	Alarm
...	...																
2920	Loop 16 Address 239 Address 240	Loop 16 address 240								Loop 16 address 239							
		Do not use	Input activated in test mode	Output status	Disabled	Fault	Early warning	Pre-alarm	Alarm	Do not use	Input activated in test mode	Output status	Disabled	Fault	Early warning	Pre-alarm	Alarm

Registers for Previdia Compact control panels (use Modbus 0x04 command to read)

Address	Name	High byte								Low byte							
		Bit 7	Bit 6	Bit 5	Bit 4	Bit 3	Bit 2	Bit 1	Bit 0	Bit 7	Bit 6	Bit 5	Bit 4	Bit 3	Bit 2	Bit 1	Bit 0
0	Control panel details Status 1	Access with level 1-4				Buzzer Silenced	Investigation	Mute	Night mode				Disabled	Fault	Early warning	Pre-alarm	Alarm
1	Control panel details Status 2							Fault on +24 RS485-2	Fault on +24 RS485-1				Fault on ground (earth)	RT network	Fault on network	Low battery	Fault on battery
2	Fault on boards 1	Fault board PREVIDIA-C-DIAL															Fault board I/O
6	Fault on boards 2							Module fault power supply module	Module fault PREVIDIA-C-COM								Module fault LED
8	Active Timers 1	Timer 16	Timer 15	Timer 14	Timer 13	Timer 12	Timer 11	Timer 10	Timer 9	Timer 8	Timer 7	Timer 6	Timer 5	Timer 4	Timer 3	Timer 2	Timer 1
9	Active Timers 2	Timer 32	Timer 31	Timer 30	Timer 29	Timer 28	Timer 27	Timer 26	Timer 25	Timer 24	Timer 23	Timer 22	Timer 21	Timer 20	Timer 19	Timer 18	Timer 17
10	Disabled Timers 1	Timer 16	Timer 15	Timer 14	Timer 13	Timer 12	Timer 11	Timer 10	Timer 9	Timer 8	Timer 7	Timer 6	Timer 5	Timer 4	Timer 3	Timer 2	Timer 1
11	Disabled Timers 2	Timer 32	Timer 31	Timer 30	Timer 29	Timer 28	Timer 27	Timer 26	Timer 25	Timer 24	Timer 23	Timer 22	Timer 21	Timer 20	Timer 19	Timer 18	Timer 17
12	Loop fault															Fault loop 2	Fault loop 1
13	Loop disabled														Loop 2 disabled	Loop 1 disabled	
20	Status of telephone communicator 1	Monitoring failed	Call queue full	SMS fault	SMS OK	Fault call failed	Fault call OK	Alarm call failed	Alarm call OK	Fault call ongoing	Alarm call ongoing				GPRS Fault	PSTN Fault	GSM Fault
21	Status of telephone communicator 2	Fault SIA over Ethernet				Fault board PREVIDIA-C-DIAL	Provider unavailable	Fault on SIM Card	Weak signal					Info call disabled	Fault call disabled	Alarm call disabled	
22	Communicator status icons	Status icons Alarm communicator								Status icons communicator fault							

Registers for Previdia Compact control panels (use Modbus 0x04 command to read)

Address	Name	High byte								Low byte							
		Bit 7	Bit 6	Bit 5	Bit 4	Bit 3	Bit 2	Bit 1	Bit 0	Bit 7	Bit 6	Bit 5	Bit 4	Bit 3	Bit 2	Bit 1	Bit 0
23	Status of the PREVIDIA-C-COM module	Fault on second WW pathway	Fault on first WW pathway	Configuration on second WW pathway	Configuration on first WW pathway				0: faults on WW 1: WW functioning	WW loss	Smart485In not present	EVAC disabled	Ethernet processor not present	Fault on +24 RS485-2	Fault on +24 RS485-1	Fault EVAC	Fault ESPA 4.4.4
25	Fire extinction module									Fault	Automatic stop	Manual stop	Pre-extinction	Extinction	Manual disabled	Automatic disabled	Disabled
49	Faults on electrovalve terminal (I/O 4)															Short circuit	Open
100	Zone 1 Zone 2	Zone 2								Zone 1							
		Smoke detection disabled	Test	Do not use	Disabled	Fault	Early warning	Pre-alarm	Alarm	Smoke detection disabled	Test	Do not use	Disabled	Fault	Early warning	Pre-alarm	Alarm
...	...																
599	Zone 999 Zone 1000	Zone 1000								Zone 999							
		Smoke detection disabled	Test	Do not use	Disabled	Fault	Early warning	Pre-alarm	Alarm	Smoke detection disabled	Test	Do not use	Disabled	Fault	Early warning	Pre-alarm	Alarm
600	Group 1 Group 2	Group 2								Group 1							
		Do not use	Do not use	Do not use	Disabled	Do not use	Early warning	Pre-alarm	Alarm	Do not use	Do not use	Do not use	Disabled	Do not use	Early warning	Pre-alarm	Alarm
...	...																
719	Group 239 Group 240	Group 240								Group 239							
		Do not use	Do not use	Do not use	Disabled	Do not use	Early warning	Pre-alarm	Alarm	Do not use	Do not use	Do not use	Disabled	Do not use	Early warning	Pre-alarm	Alarm
900	Channels I/O 1, I/O 2	Channel I/O 2								Channel I/O 1							
		Do not use	Input activated in test mode	Output status	Disabled	Fault	Early warning	Pre-alarm	Alarm	Do not use	Input activated in test mode	Output status	Disabled	Fault	Early warning	Pre-alarm	Alarm
901	Channels I/O 3, I/O 4	Channel I/O 4								Channel I/O 3							
		Do not use	Input activated in test mode	Output status	Disabled	Fault	Early warning	Pre-alarm	Alarm	Do not use	Input activated in test mode	Output status	Disabled	Fault	Early warning	Pre-alarm	Alarm
932	Relay output									Do not use	Do not use	Output status	Disabled	Do not use	Do not use	Do not use	Do not use

Registers for Previdia Compact control panels (use Modbus 0x04 command to read)

Address	Name	High byte								Low byte								
		Bit 7	Bit 6	Bit 5	Bit 4	Bit 3	Bit 2	Bit 1	Bit 0	Bit 7	Bit 6	Bit 5	Bit 4	Bit 3	Bit 2	Bit 1	Bit 0	
1000	Information not shared over Hornet																	Rearm Control panel
1001	Loop 1 Address 1 Address 2	Loop1 address 2								Loop1 address 1								
		Do not use	Input activated in test mode	Output status	Disabled	Fault	Early warning	Pre-alarm	Alarm	Do not use	Input activated in test mode	Output status	Disabled	Fault	Early warning	Pre-alarm	Alarm	
...	...																	
1120	Loop 1 Address 239 Address 240	Loop1 address 240								Loop1 address 239								
		Do not use	Input activated in test mode	Output status	Disabled	Fault	Early warning	Pre-alarm	Alarm	Do not use	Input activated in test mode	Output status	Disabled	Fault	Early warning	Pre-alarm	Alarm	
1121	Loop 2 Address 1 Address 2	Loop 2 address 2								Loop 2 address 1								
		Do not use	Input activated in test mode	Output status	Disabled	Fault	Early warning	Pre-alarm	Alarm	Do not use	Input activated in test mode	Output status	Disabled	Fault	Early warning	Pre-alarm	Alarm	
...	...																	
1240	Loop 2 Address 239 Address 240	Loop 2 address 240								Loop 2 address 239								
		Do not use	Input activated in test mode	Output status	Disabled	Fault	Early warning	Pre-alarm	Alarm	Do not use	Input activated in test mode	Output status	Disabled	Fault	Early warning	Pre-alarm	Alarm	

3.1.2 COIL Mapping

By means of the "WRITE SINGLE COIL" command it is possible to carry out operations on the addressed control panel. To activate a COIL command relative to the implementation of an operation it is necessary to set it to "ON".

Following is the map of COIL registers:

COIL (use the Modbus 0x05 command)

Address	Name for Previdia Max	Address	Name for Previdia Max
0	Implement "Action 1"	5500	Enable/Disable relay 1 of module IFM4R 1
...
99	Implement "Action 100"	5563	Enable/Disable relay 4 of module IFM4R 16
100	Enable/Disable Zone 1	5600	Enable/Disable output 1 of module IFM24160 1
...
1099	Enable/Disable Zone 1000	5611	Enable/Disable output 3 of module IFM24160 4
1100	Enable/Disable I/O 1 of module IFM4IO 1	5700	Enable/Disable address 1 of loop 1
...
1163	Enable/Disable I/O 4 of module IFM4IO 16	9540	Enable/Disable address 240 of loop 16
1200	Activate/Deactivate relay 1 of module IFM4R 1	20000	Perform test for zone 1
...
1263	Activate/Deactivate relay 4 of module IFM4R 16	20999	Perform test for zone 1000
1300	Activate/Deactivate output 1 of module IFM24160 1	21000	Set day mode
...	...	21001	Switch off buzzer
1311	Activate/Deactivate output 3 of module IFM24160 4	21002	Silence
1400	Activate/Deactivate output of device with address 1 of loop 1	21003	Investigation
...	...	21004	End pre-alarms
5239	Activate/Deactivate output of device with address 240 of loop 16	21005	Rearm
5400	Activate/Deactivate I/O 1 of module IFM4IO 1		
...	...		
5463	Enable/Disable I/O 4 of module IFM4IO 16		

COIL (use the Modbus 0x05 command)

Address	Name for Previdia Compact	Address	Name for Previdia Compact
0	Implement "Action 1"	5500	Enable/Disable relay
...	...	5700	Enable/Disable address 1 of loop 1
99	Implement "Action 100"
100	Enable/Disable Zone 1	6179	Enable/Disable address 240 of loop 2
...	...	20000	Perform test for zone 1
1099	Enable/Disable Zone 1000
1100	Activate/Deactivate I/O 1	20999	Perform test for zone 1000
...	...	21000	Set day mode
1103	Activate/Deactivate I/O 4	21001	Switch off buzzer
1200	Activate/Deactivate relay	21002	Silence
1400	Activate/Deactivate output of device with address 1 of loop 1	21003	Investigation
...	...	21004	End pre-alarms
1879	Activate/Deactivate output of device with address 240 of loop 2	21005	Rearm
5400	Enable/Disable I/O 1		
...	...		
5403	Enable/Disable I/O 4		

3.2 BACnet

BACnet is a building-automation-network communication protocol developed by ASHRAE (American Society of Heating, Refrigeration and Air-Conditioning Engineers). BACnet, as a result of its versatility and flexibility, is now extensively used as a standard communication protocol between devices and building-automation systems made by various manufacturers.

BACnet protocol is implemented on the IFMLAN module for Previdia Max control panels and on the PREVIDIA-C-COM-LAN module for Previdia Compact control panels, and its use is subject to a licence.

3.2.1 BACnet licence

The licences for use of the BACnet protocol on Previdia control panels must be purchased from Inim Electronics.

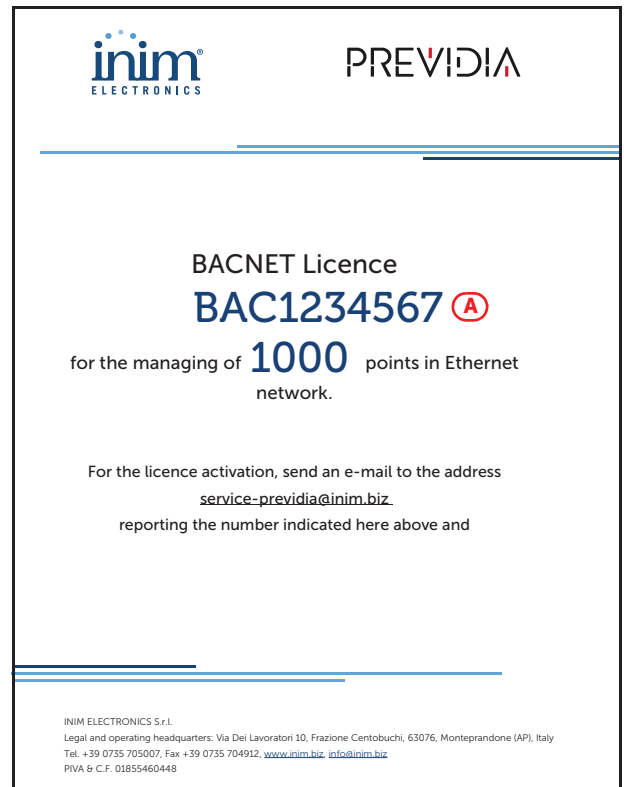
The order codes are as follows:

- **INFLINIOPRALICBAC500**, BACnet protocol licence Previdia 500 points, Italian
- **INFLINEOPRALICBAC500**, BACnet protocol licence Previdia 500 points, English

Each licence allows the management of 500 points. For the management of a greater number of points it is necessary to purchase more than one licence. Inim Electronics supplies a single licence containing the sum of the licences purchased as per the format indicated here.

3.2.2 Licence activation procedure

1. In order to activate the licence you must communicate the following data to Inim:
 - the licence number shown in the letter *[A]*
 - the serial number of the LAN module in use *[B]* (IFMLAN for Previdia Max and PREVIDIA-C-COM for Previdia Compact). This data can be found in the software solution of the Previdia being configured, by going to the programming section of the module in the control panel.



2. The activation of the licence can be carried via e-mail or web.brower.

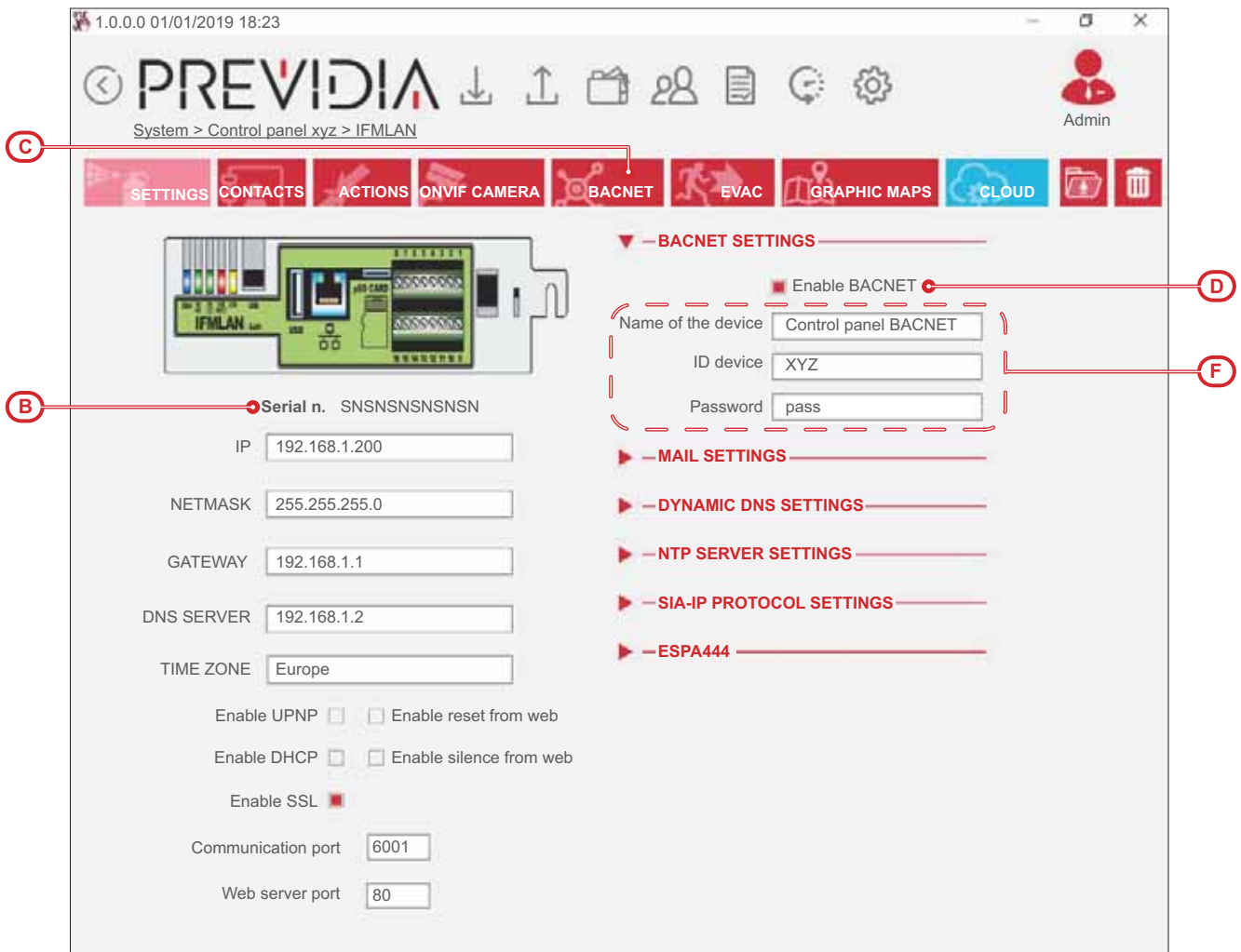
Via e-mail: send an e-mail to **service-previdia@inim.biz** containing the numbers previously indicated. You will receive an e-mail containing a file block which corresponds to the actual licence, required to block BACnet functionality.

Via web: by connecting to the **service-previdia.inimcloud.com** website it is possible to request the activation of a BACnet licence. After providing the previously mentioned data, the website will send you a file which corresponds to the actual licence.

3. After receiving the block file you must go back to the software solution associated with the control panel you are configuring. In the LAN module programming section you must go to the "Settings" subsection and enable the "Enable BACnet" option *[C]*.
4. Enter the following data in the fields below *[D]*, for communication with the provider:
 - BACnet device name
 - BACnet device ID
 - Password BACnet
5. Go to the "BACnet" subsection *[E]*. This section provides the **Load licence file** button which allows you to inform the software of the location of the received file inside the computer.
6. Clicking on the **Activate licence** button, sends the licence to the LAN module.

Following the activation of the licence it is possible to perform the integration of the Previdia system using the BACnet protocol.





3.2.3 BACnet objects

Following are the BACnet objects made available by Previdia and their essential features. For licencing purposes, each of the objects belonging to the typology listed below constitutes a "point".

- Life Safety Point
- Binary Input
- Binary Output
- Life Safety Zone

Life Safety Point

The "life safety point" comprises objects that represent the status of a specific point included in the following:

- Loop point
- I/O channel (on board or as an accessory module)
- Extinction channel (only one point for each module in the case of IFMEXT module)

The status of each point is characterized by a defined list of values (stand-by, alarm, fault, etc.).

It is not possible to interact with a life safety point, change its status or bypass it.

Life Safety Zone

The "life safety zone" comprises objects that indicate the status of a zone. Therefore, they can be associated with the zones of the control panel that are linked to points.

It is not possible to interact with a life safety zone change its status or bypass it.

Binary Output

This object represents the status of any of the control panel outputs.

It is possible to change the status through the BACnet protocol. The "Binary output" objects of the Previdia control panel are the:

- Loop point
- I/O channel (on board or as an accessory module)
- Relay output (on board or as an accessory module)
- Actions on control panel

The actions on the control panel allow you to interact with the system. These are actions such as "silence sounders", "rearm control panel" or "investigate".

Binary Input

These objects represent the status of any of the control panel inputs, therefore, not is possible to view the status but not set it. On the Previdia control panel they are used for the viewing of some control panel conditions.

- Alarm
- Pre-alarm
- Fault
- Disable
- Night mode
- Sounder silenced
- Investigation

3.2.4 Creation of BACnet points via software

To create BACnet points it is necessary to open the software, load the Hornet+ control panel software solution concerned, access the respective page for programming a LAN module and, finally, access the "BACnet" section.

This section provides the tools for the creation of life safety points. The other three sections ("Life safety zone", "Binary input" and "Binary output") function in the same way.

1. Select the control-panel point typology by means of the appropriate check boxes with dropdown menus [A]. In the section below [B] a list of points that correspond to the selection made will appear.
2. From the list select or deselect the BACnet points you wish to create.
3. Click on **Add** [C]. From this moment on, the selected points will be shown in the "Life safety point" list [D]. The points in this section can be removed from the list by simply unticking the corresponding boxes.
4. Click on the **Write** button [E] to send the programming to the control panel.

This procedure is valid for all BACnet point typologies.

1.0.0.0 01/01/2019 18:23

PREVIDIA

System > Control panel xyz > IFMLAN

Admin

SETTINGS CONTACTS ACTIONS ONVIF CAMERA BACNET EVAC GRAPHIC MAPS CLOUD

Control panel: Control panel xyz

ID device: IFM2L

Module: IFM2Lx

BINARY INPUT

Point	Label	Index
Control panel x	Room 1	1
Control panel x	Room 2	2
Control panel x	Room 3	3
Control panel x	Room 4	4
Control panel x	Room 5	5
Control panel x	Room 6	6

BINARY OUTPUT

LIFE SAFETY POINTS

Point	Label	Index
Control panel x	Office 1	1
Control panel x	Office 2	2
Control panel x	Office 3	3
Control panel x	Office 4	4
Control panel x	Office 5	5
Control panel x	Office 6	6
Control panel x	Room 1	7
Control panel x	Room 2	8
Control panel x	Room 3	9
Control panel x	Room 4	10
Control panel x	Room 5	11
Control panel x	Room 6	12

LIFE SAFETY ZONES

3.3 SmartLook Software

The Previdia control panels can be supervised through the SmartLook software program created by Inim Electronics.

The SmartLook program is capable of enrolling the elements installed on the system either by reading the control panel directly or through the importation of data from the configuration software. At this point all that is necessary is to provide the graphic maps with image files and drag the icons of the objects installed on the system onto them.



SmartLook uses Modbus over TCP/IP to communicate with the control panel (refer to *paragraph 3.1 Modbus RTU and Modbus over TCP/IP*). During the configuration phase, SmartLook asks for the addresses of Previdia control panels on the Modbus and Hornet+ networks.

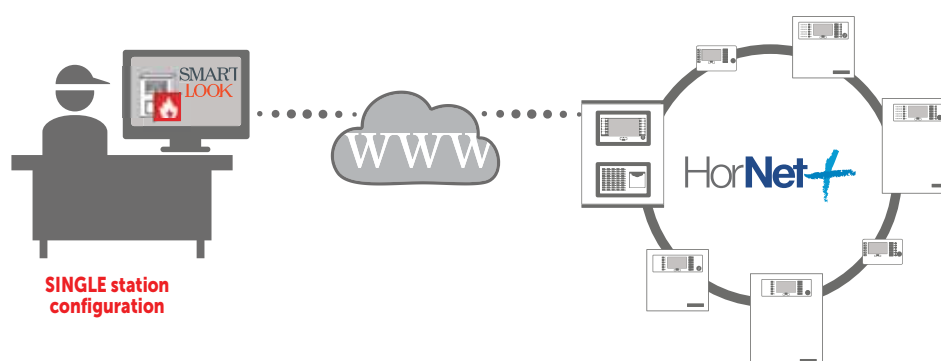
Note: *The address of a control panel in Modbus must coincide with that in Hornet+.*

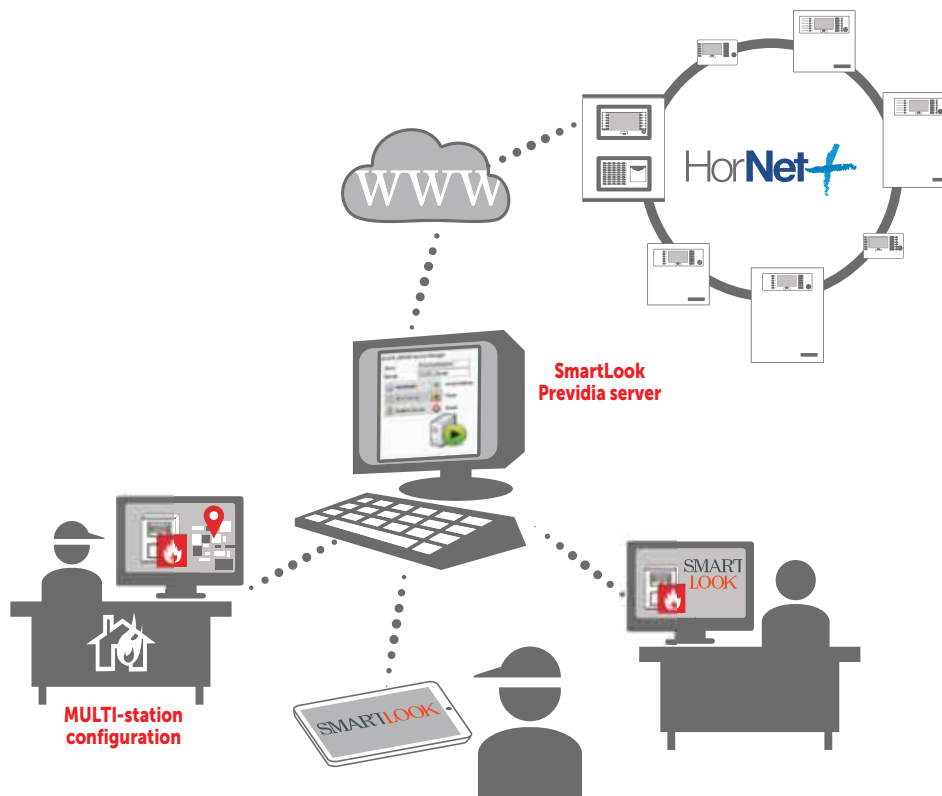
For further information refer to the SmartLook software manual.

3.4 SmartLook Previdia server

"SmartLook Previdia server" software allows the monitoring of a fire detection and alarm system built using Previdia series control panels (both Previdia MAX and Previdia Compact) from multiple PCs, up to a maximum of 10, on which the SmartLook software is installed.

The SmartLook software can operate as a client of the Previdia SmartLook server. In such cases, it is necessary to indicate in the SmartLook settings the address of the server rather than the address of a control panel as the connection address.





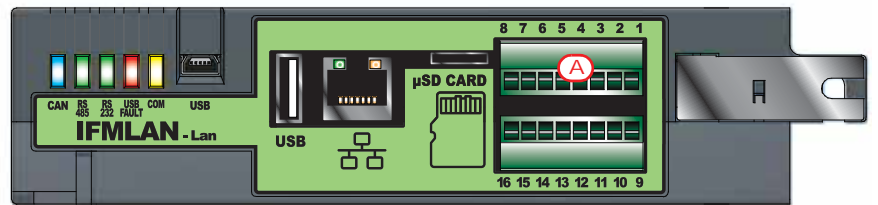
For further information, refer to the documentation relating to the SmartLook monitoring software.

Pager systems

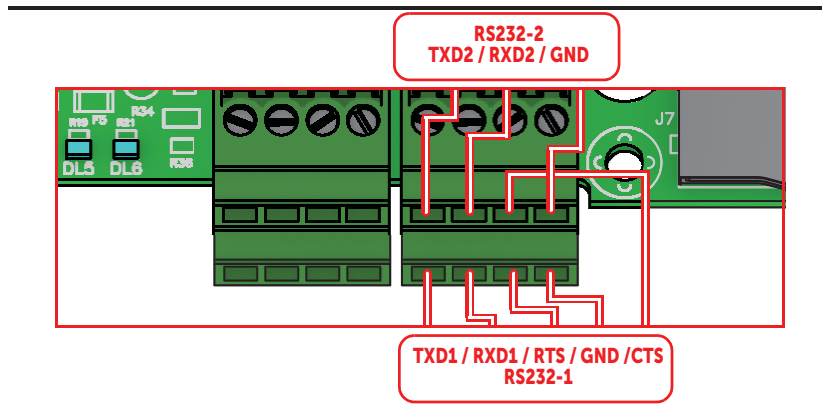
ESPA 4.4.4 is a standard protocol for the interconnection of paging systems, PABXs and automatic fire-detection systems. This protocol allows the exchange/sending of text messages between mobile devices such as pagers, cordless telephones, etc.

ESPA 4.4.4 protocol is implemented for Previdia Max control panels within the IFMLAN module, through the RS232 communication port [A].

Serial	Terminal	
RS232	1	Programmable ancillary power output
	2	RS232 TX
	3	RS232 RX
	4	RS232 RTS
	5	RS232 CTS
	6	Negative (GND, ⊖)
	7, 8	Ground (Earth)



For Previdia Compact control panels the ESPA 4.4.4 protocol is implemented inside the PREVIDIA-C-COM accessory module, through its two RS232 ports [B].



The protocol communication parameters can be configured through the Previdia control-panel configuration software. Access the module programming page, then in the "Settings" sub-section and click on "ESPA 4.4.4".

1.0.0.0 01/01/2019 18:23

PREVIDIA

System > Control panel xyz > IFMLAN

Admin

SETTINGS CONTACTS ACTIONS ONVIF CAMERA BACNET EVAC GRAPHIC MAPS CLOUD



Serial n. SNSNSNSNSNSN

IP 192.168.1.200

NETMASK 255.255.255.0

GATEWAY 192.168.1.1

DNS SERVER 192.168.1.2

TIME ZONE Europe

Enable UPNP Enable reset from web

Enable DHCP Enable Silence from web

Enable SSL

Communication port 6001

Web server port 80

▶ — BACNET SETTINGS —

▶ — MAIL SETTINGS —

▶ — DYNAMIC DNS SETTINGS —

▶ — NTP SERVER SETTINGS —

▶ — SIA-IP PROTOCOL SETTINGS —

▼ — ESPA444 —

Serial port RS232

Parity None

Stop bit 1

Data bit 7

Bits per second 300

Address 1

Pager address 1

Hand shake No

Add zone label

Add control panel label

Master

Delete event label

Refer to the Previdia programming manual for further details.

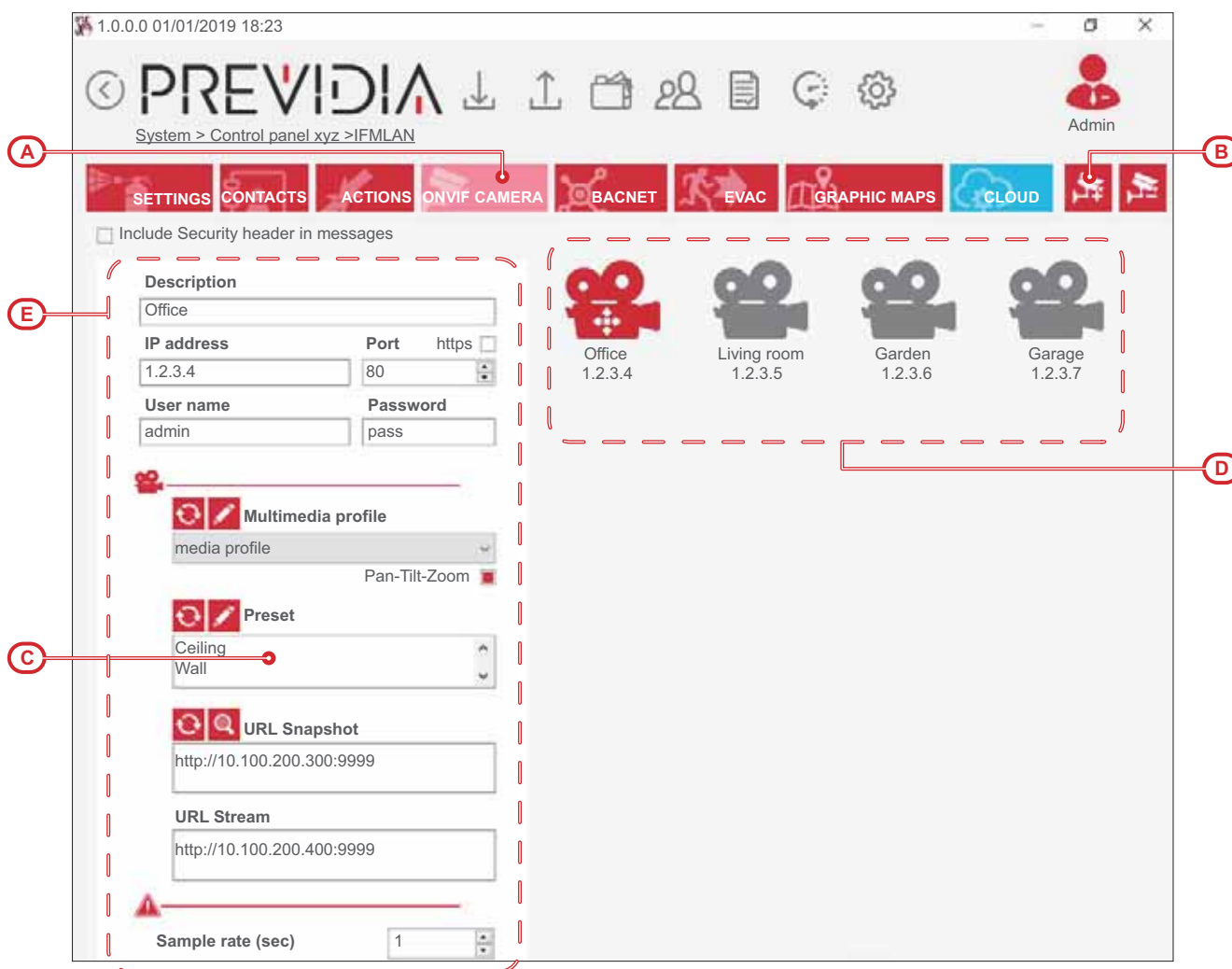
Video verification

Control panels from the Previdia series are capable of capturing images from IP cameras equipped with ONVIF. These images can be displayed on screens or forwarded from a remote location via e-mail to provide the end-user with a clear understanding of what is happening in the environment signalling the alarm.

The video verification function is implemented inside the IFMLAN module for Previdia Max control panels, and inside the PREVIDIA-C-COM-LAN module for Previdia Compact control panels. Using the configuration software it is possible to define the list of IP cameras (up to 200) with which the Previdia system is to interact.

Access the module programming page, then the "Onvif camera" sub-section [A].

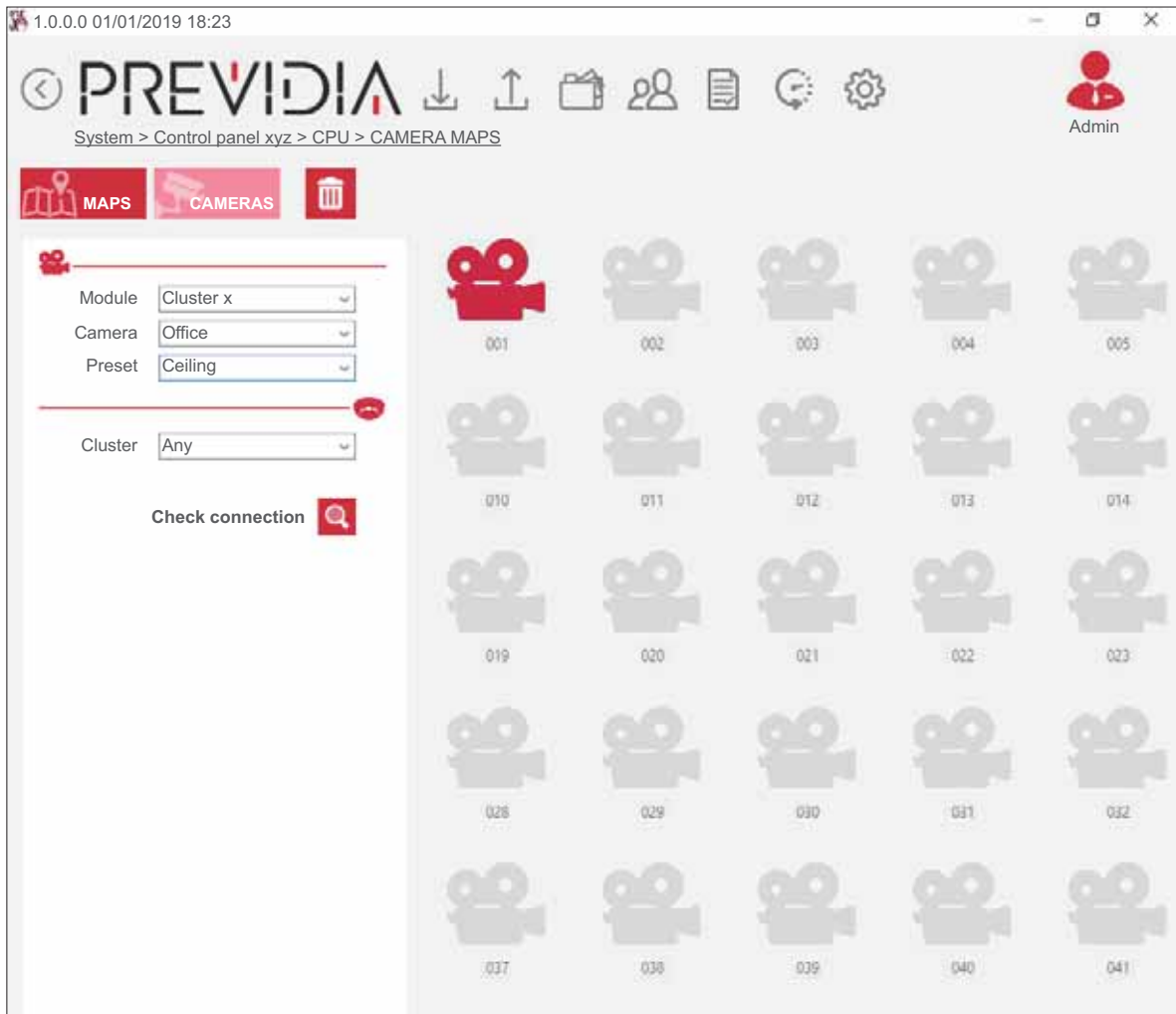
To add the cameras to the configuration simply click-on the **Add** button [B]. Each camera will acquire the various available "preset" parameters [C].



The section on the right [D] contains a list of all the configured IP cameras, while the section on the left [E] contains the parameters of the selected camera.

Once the IP camera list has been defined, the configuration software will allow you to establish a series of presettings that permit the identification of the specific IP camera and the correct preset in accordance with each event.

To program the presets go to the programming section of the graphic maps. To reach the IP Camera section you must first access the programming section of the FPMCPU front plate module, click-on the **"Graphic maps"** button then access the **"Cameras"** sub-section.



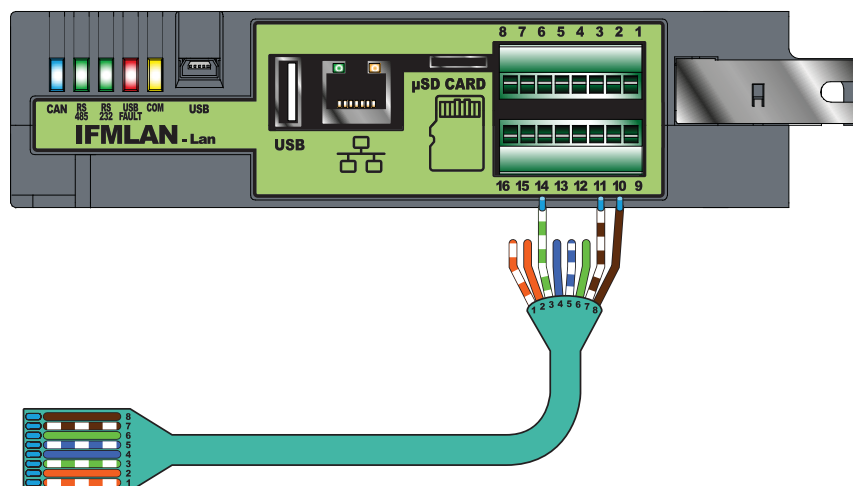
Refer to the Previdia programming manual for further details.

Voice Evac-systems

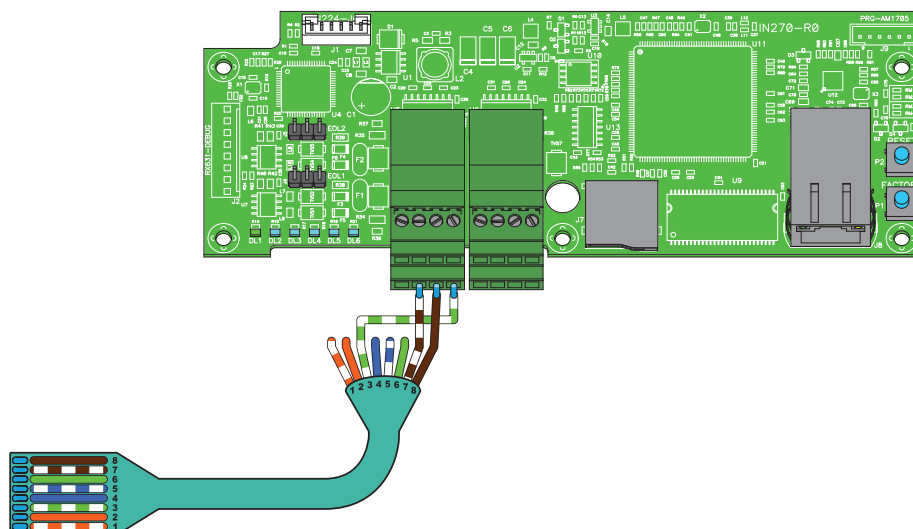
Previdia control panels can be interconnected with the following voice evacuation systems:

- Paso

The voice evacuation systems made by Paso can be connected to the IFMLAN module through the RS485 port.



PREVIDIA-C-COM has two RS485 ports, both usable with a connection such as the following:



- Tutondo

Via TCP-IP connection, the voice evacuation systems produced by Tutondo can be connected to the IFMLAN module, for the Previdia Max control panel, and to the PREVIDIA-C-COM-LAN module, for the Previdia Compact control panel.

6.1 Voice Evac configuration

Once the control panel has been connected to the voice evacuation system, the configuration software will allow you to configure each speaker line (evacuation zone) as an output capable of activating warning and evacuation messages.

Access the page relative to the programming of the IFMLAN module, then access the “Evac” sub-section [A].

1. Select the typology of voice-evacuation system [B].
2. Indicate the address of the Previdia control panel on the selected evacuation system [C]:

- for "Paso" it is necessary to indicate the address on the RS485 connection BUS
 - for "Tutondo" it is necessary to indicate the IP address and the port
3. Indicate the number of evacuation zones (speaker lines) in the "Number of zones" box [D].

An icon will be added to the list at the bottom of the section for each added zone. For "Tutondo", it is necessary to add "End evacuation" to all zones, a message common to all zones.

4. Select the individual evacuation zone from the list [E] and program the parameters [F].

The screenshot displays the PREVIDIA web interface for configuring evacuation zones. The top navigation bar includes 'SETTINGS', 'CONTACTS', 'ACTIONS', 'ONVIF CAMERA', 'BACNET', 'EVAC', 'GRAPHIC MAPS', and 'CLOUD'. The 'EVAC' tab is active, showing a configuration form for a 'Tutondo' type zone. The form includes fields for 'Type' (Tutondo), 'Zone number' (1), 'IP' (10.1.2.3), and 'Port' (50000). Below the form, there is a list of evacuation zones (Evac zone 001, Evac zone 002, Evac zone 003, Evac zone 004) and an 'End of evacuation' message, each with a speaker icon. A 'Silenceable' checkbox is also present. Red callout boxes A-F point to specific UI elements: A (Admin user), B (Type dropdown), C (IP field), D (Zone number spinner), E (Zone list), and F (Silenceable checkbox).



ISO 9001 Quality Management
certified by BSI with certificate number FM530352

Centobuchi, via Dei Laboratori 10
63076 Montepandone (AP) Italy
Tel. +39 0735 705007 _ Fax +39 0735 704912

info@inim.biz _ www.inim.biz



DCMBINE0PREVIDIA-120-20200115